



KONICA MINOLTA

magicolor 4650 series

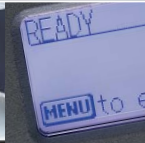
DO BUSINESS BETTER



CONNECT

COMMUNICATE

CONTROL



SLEEK, SMART AND STATEMENT-MAKING.

Modern design meets efficiency in the magicolor® 4650 series. These stylish printers deliver eye-catching documents at top speeds without sacrificing quality. At 25 pages per minute and impressive 9600 x 600 dpi-class contone color, the magicolor 4650EN and magicolor 4650DN produce professional, high-quality prints in a flash. And these quiet powerhouses won't disturb your office. Even while duplexing, the magicolor 4650DN keeps noise levels at a minimum so your productivity levels can be maximized. Time saving print options and user friendly design make the magicolor 4650 series the perfect complement to any productive workgroup.



The essentials of imaging

magicolor 4650 series

- ▶ 25 PPM IN COLOR AND B&W FOR HIGH-DEMAND JOBS
- ▶ BOLD 9600 X 600 DPI-CLASS PHOTOART CONTONE COLOR
- ▶ EMPERON™ PRINT SYSTEM FOR HIGH PERFORMANCE
- ▶ 256 MB RAM, OPTIONAL 40 GB HARD DRIVE TO BOOST PRODUCTIVITY
- ▶ POSTSCRIPT 3 & PCL 6 EMULATIONS
- ▶ DIRECT PRINT PDF, XPS, JPEG & TIFF FILES
- ▶ NATIVE XPS INTERPRETER FOR WINDOWS VISTA, INCLUDING WSD SUPPORT
- ▶ GIGABIT ETHERNET, USB 2.0 AND PARALLEL INTERFACES
- ▶ ECONOMICAL DUPLEX PRINTING WITH DN MODEL
- ▶ USER-FRIENDLY, ERGONOMIC DESIGN
- ▶ RELIABLE 90,000 PAGE-PER-MONTH MAXIMUM DUTY CYCLE
- ▶ PAGESCOPE SOFTWARE SUITE SIMPLIFIES NETWORK MANAGEMENT



DO BUSINESS BETTER



POWER AND VIVID VERSATILITY

Sleek, productive package. The magicolor 4650 series features the equipment every workgroup needs to captivate audiences and remain competitive.

Attention-demanding, color laser. Equipped with 9600 x 600 dpi-class contone color, the magicolor 4650 series produces eye-catching, bold graphics and crisp text project after project at 25 ppm for color and b&w.

Countless options for complete customization. Options, including a 40 GB hard drive, expandable memory and an additional input tray, offer users endless possibilities for personalization.



ECONOMICAL CONVENIENCE

Save time and paper. The magicolor 4650DN comes equipped with an internal, automatic duplexer. Two-sided printing delivers high-impact documents while using 50% less paper. It also utilizes an enhanced paper crossing system that allows the printer to maintain 100% productivity while producing two-sided documents.

SLEEK, NEW DESIGN. A LOWER HEIGHT OF 15.2" AND STYLISH MODERN DESIGN MAKE THE MAGICOLOR 4650 SERIES THE PERFECT COMBINATION OF STYLE AND FUNCTIONALITY.

SUPERB QUALITY. THE MAGICOLOR 4650 SPECS INCLUDE HIGH RESOLUTION AND A DEPENDABLE DUTY CYCLE OF 90,000 PRINTS PER MONTH. TRANSLATION: HIGH QUALITY YOU CAN RELY ON, FROM THE FIRST PAGE TO THE LAST.



FEATURES, OPTIONS & BENEFITS

Powered by Emperon. Equipped with Emperon technology and 500 MHz processor, the magicolor 4650 series boasts a first-page output time of 14.5 seconds. And it quickly delivers 25 pages per minute—color and black and white.

Time-saving direct print options. The magicolor 4650 series allows users to print XPS, PDF, JPEG and TIFF files directly from a USB flash drive, or drag and drop the files for print using PageScope Direct Print.

Quiet workhorse. The magicolor 4650 series features a low acoustic noise level so it will never disturb your workflow. When producing bold, two-sided documents the magicolor 4650DN remains quiet while delivering high throughput.

Stylish, ergonomical design. With a height of only 15.2 inches, the magicolor 4650 series seamlessly fits into any workgroup. And its simple control panel design allows users to quickly navigate through the intuitive menu with total ease. The series is also equipped with InfoLine-style display for at-a-glance printer status up close or from a distance.

Robust and reliable. This dependable dynamo effortlessly tackles high-volume printing. With a monthly duty cycle of 90,000 prints, this efficient office assistant won't disappoint.

Contone color communicates. The magicolor 4650 series boasts 9600 x 600 dpi-class color and eAIDC automatic color calibration which ensures consistent, incredible output every time. PhotoArt contone technology delivers crisp detail, smooth gradients and accurate colors. And while utilizing the toner save mode, users can conserve toner usage—up to 60%, while maintaining text quality.

Buy with confidence. The magicolor 4650 series is backed by a one-year on-site warranty and 24/7 online technical support for complete peace of mind.

Flexible interfaces. A Gigabit Ethernet interface offers high-speed network printing for any size workgroups. Users can also connect via USB 2.0 and parallel ports for effortless local operation.



POWERFUL PAGESCOPE™ SOFTWARE. PAGESCOPE WEB CONNECTION FOR WEB-BASED DEVICE MANAGEMENT, PAGESCOPE NET CARE FOR REMOTE CONFIGURATION OF MIB-COMPLIANT PRINTERS, DESKTOP STATUS MONITOR FOR PRINT STATUS REVIEW AND ERROR ALERTS.

REDUCED NOISE LEVELS. LOWER ACOUSTIC LEVELS ALLOW YOUR WORKGROUP TO CARRY ON BUSINESS AS USUAL WHILE MAINTAINING AN ULTRA-FAST PRINT TIME TO KEEP YOUR TASKS ON TRACK.

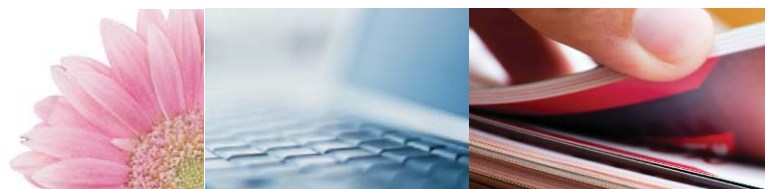


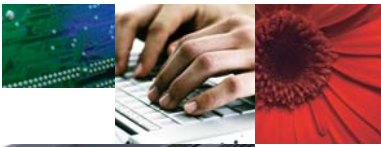
25 PPM **25 PPM**



EDGE ENHANCEMENT. GET NOTICED BY USING THE EDGE ENHANCEMENT FUNCTION. EVEN SMALL FONT SIZES HAVE CLEAR AND CRISP CHARACTERS SO YOUR DOCUMENTS RECEIVE THE ATTENTION THEY DESERVE.

VERSATILE HANDLING. FOR BIG PROJECTS, THE MAGICOLOR 4650 SERIES CAN BE EQUIPPED WITH AN 500-SHEET CASSETTE FOR A MAX INPUT OF 850 SHEETS. THE MAGICOLOR 4650DN HAS A BUILT-IN AUTO DUPLEXER THAT EASILY HANDLES YOUR COLORFUL BOOKLETS AND MULTI-PAGE FILES.





magicolor 4650 series

GENERAL SPECIFICATIONS

PRINTING PROCESS

PRINT METHOD:
Electrophotographic Laser

PRINT SPEED*:

Color: 25 ppm
Monochrome: 25 ppm
*Exact print speed differs depending on system configuration, software application, driver, and document complexity.

FIRST-PAGE OUTPUT TIME:

Color: 14.5 seconds
Monochrome: 14.5 seconds

RESOLUTION:

9600 x 600 dpi-class with PhotoART
(600 x 600 x 4 bit contone)

MAXIMUM MONTHLY DUTY CYCLE:

90,000 prints

HARDWARE AND SOFTWARE CAPABILITIES

PROCESSOR:

500 MHz Marvell Orion II

MEMORY:

256 MB
Upgradeable to 768 MB

HARD DISK DRIVE (optional):

40 GB

COMPACT FLASH CARD (optional)*:

256 MB, 512 MB, 1 GB, 2 GB, 4 GB
*Requires Compact Flash Card adapter. Cannot be installed at the same time as Hard Drive option.

OPERATING SYSTEM COMPATIBILITY:

Windows Vista
Windows Vista x64
Windows Server 2003
Windows Server 2003 x64
Windows XP
Windows XP x64
Windows 2000
Macintosh OS X (v10.2+)
Macintosh OS X (Intel) (v10.4+)
Linux Red Hat 9
Linux SuSE 8.2

PRINTER EMULATIONS:

PostScript 3
PCL 6
XPS Direct Print*
PDF 1.6 Direct Print**
JPEG/TIFF Direct Print**
*Requires optional Hard Drive
**Requires optional Hard Drive or Compact Flash Card

CAMERA DIRECT PHOTO PRINT:

Pictbridge 1.0 via USB 1.1 Host

PRINTER MANAGEMENT:

PageScope Net Care
PageScope Web Connection
PageScope Network Setup
PageScope EMS Plug-Ins:
Tivoli Netview
CA Unicenter
HP Open View
Microsoft Management Console (MMC)
PageScope Web Jet Admin Plug-In
PageScope Plug and Print
PageScope NDPS Gateway
PageScope Direct Print

COLOR CONTROL:

Enhanced Automatic Image Density Control (eAIDC)
ICC device profiles
Automatic ICC-based color matching
Dynamic Contone Screening
PANTONE Color Tables
SWOP, Commercial, EuroColor, DIC, and TOYO press emulations

INTERFACE SUPPORT

Gigabit Ethernet (10/100/1000BaseTX)
IEEE 1284 Parallel
USB 2.0
USB 1.1 Host Port

ETHERNET PROTOCOLS:

TCP/IP (IPv4/IPv6, IPsec, SSL, IEEE802.1x)
AppleTalk / EtherTalk
IPX/SPX (Netware 4/5/6), NDS Bindery, NDPS
ARP, Ping
Bonjour
DHCP, AutoIP, BOOTP
FTP
HTTP, HTTPS
IPP 1.1
LPR/LPD
NetBEUI, SMB
RAW Socket
SMTP
SNMP (v1/2/3)
SNTP
SLP
UDP
WSD

PAPER HANDLING

STANDARD PAPER INPUT:

100-sheet multipurpose tray
250-sheet cassette

STANDARD PAPER OUTPUT:

200-sheet face-down output tray

OPTIONAL PAPER INPUT:

500-sheet lower feeder unit

STANDARD AUTOMATIC DUPLEXER*:

For two-sided printing (plain paper only)
*magicolor 4650DN only

PAPER SIZES SUPPORTED:

100-sheet multipurpose tray:
Letter
Legal
4" x 6"
Executive
Folio
Govt. Letter
Govt. Legal
Statement
A4, A5, A6
B5, B6
Custom sizes:
(W) 3.6"-8.5" to (H) 5.8"-14"
(W) 92-216 mm to (H) 148-356 mm
Envelopes: Monarch, Com 10, DL, B5 (ISO), C6

250-sheet cassette:

Letter
4" x 6"
Executive
Statement
Govt. Letter
A4, A5, A6
B5, B6
Custom sizes:
(W) 3.6"-8.5" to (H) 5.8"-11.7"
(W) 92-216 mm to (H) 148-297 mm

500-sheet lower feeder unit (optional):

Letter
Legal
Executive
Govt. Legal
A4
B5

Duplexer: (magicolor 4650DN only)

Letter
Legal
Executive
Folio
Govt. Letter
Govt. Legal
A4
B5

Custom sizes:

(W) 7.2"-8.5" to (H) 10.1"-14"
(W) 182-216 mm to (H) 257-356 mm

PRINTABLE AREA:

0.17" (4.2 mm) from all edges
13.7" maximum print length

PAPER WEIGHTS:

Plain paper: 16-24 lb. Bond (60-90 g/m²)
Thick Stock: Up to 110 lb. Index (210 g/m²)
(via multipurpose tray only)
Duplexer: 16-24 lb. Bond (60-90 g/m²)

PRINT MEDIA:

Plain Paper
Recycled Paper
Letterhead
Thick Stock
Glossy Stock
Transparencies
Laser Quality Labels
Envelopes
Postcards

PHYSICAL

TYPE:

Laser printer with Emperon technology

DIMENSIONS (WXDXH):

18.5" x 21.1" x 15.2"
(469 x 536 x 385 mm)

WEIGHT:

magicolor 4650EN
77.4 lbs (35 kg) - w/ consumables
65.2 lbs (30 kg) - w/o consumables
91.3 lbs (41.5 kg) - as shipped
magicolor 4650DN
79.1 lbs (36 kg) - w/ consumables
66.9 lbs (30 kg) - w/o consumables
91.3 lbs (41.5 kg) - as shipped

ELECTRICAL

POWER REQUIREMENTS:

120 VAC, 50/60 Hz
220-240 VAC, 50/60 Hz

POWER CONSUMPTION:

Operating: 550W or less, 1200W Max.
Standby: 140W or less

ENERGY STAR COMPLIANT*:

16Wh or less
*magicolor 4650DN only. The addition of some options, in some combinations, may cause the product to become non-compliant.

ENVIRONMENTAL

TEMPERATURE REQUIREMENTS:

Operating: 50° to 95° F (10° to 35° C)
Non-Operating: 32° to 95° F (0° to 35° C)

HUMIDITY:

Operating: 15% to 85% RH
Non-Operating: 30% to 85% RH

NOISE LEVELS:

Operating: <52 dB(A)
Standby: <39 dB(A)

REGULATORY/SAFETY CONFORMITY:

UL
cUL
CDRH
CSA
DOC
FCC-B

CONSUMABLES*:

In-Box Toner: Cyan, Magenta, Yellow, Black
(yield up to 3,000 pages @ 5% coverage)
Replacement Toner: Cyan, Magenta, Yellow, Black
(yield up to 4,000 or 8,000 pages @ 5% coverage)
Imaging Unit: Cyan, Magenta, Yellow, Black
(yield up to 30,000 pages @ 5% coverage)
Waste Toner Box

*The stated life expectancy of each consumable is based on printing under specific operating conditions such as page coverage for a particular page size (5% coverage of letter/A4). The actual consumable's life will vary depending on the use and other printing variables including page coverage, page size, media type, continuous or intermittent printing, ambient temperature, and humidity.

TYPEFACES:

137 resident PostScript fonts
93 PCL fonts
10 line printer fonts

WARRANTY:

1-year on-site



Office imagery courtesy of Knoll, Inc.

© 2008 KONICA MINOLTA BUSINESS SOLUTIONS U.S.A., INC. All rights reserved. Reproduction in whole or in part without written permission is prohibited. Konica Minolta and The essentials of imaging are trademarks of KONICA MINOLTA HOLDINGS, INC. PageScope is a trademark of KONICA MINOLTA BUSINESS TECHNOLOGIES, INC. magicolor and Simitri are registered trademarks of KONICA MINOLTA BUSINESS SOLUTIONS U.S.A., INC. All other brands and product names are registered trademarks or trademarks of their respective owners.

Design and specifications are subject to change without notice.



KONICA MINOLTA

KONICA MINOLTA
BUSINESS SOLUTIONS U.S.A., INC.

100 Williams Drive
Ramsey, NJ 07446

(800) 523-2696

www.kmbs.konicaminolta.us

www.kmbs.konicaminolta.us/solutions