

# C3530n MFP

**OKI**<sup>®</sup>  
PRINTING SOLUTIONS



**Fast, convenient all-in-one functionality  
with High Definition Color**





## Outstanding color printing, copying and scanning with analog fax in one compact, easy-to-use device

**The C3530n MFP from OKI Printing Solutions is one of the smallest and fastest MFPs in its class.** It's an ideal solution for individuals and small workgroups who require a fast, reliable and affordable MFP that delivers high-quality color, ease of use and full multifunctionality.

Key features of the C3530n MFP include: print and copy speeds of up to 16 ppm in color, 20 ppm in black & white<sup>1</sup>; a convenient USB front port for scan-to-memory stick; 10/100 Base-T network and USB high-speed connectivity; full-featured analog fax.

**Unmatched print speed and quality** – Not only can the C3530n MFP print up to twice as fast as most competitors, with High Definition Color print technology and 1200 x 600 dpi print resolution, there is no compromise on output quality.

Multi-level printheads and microfine toner provide more detail, greater color depth, reduced grain and a high gloss finish—for breathtaking output even on ordinary office paper. And Auto Color Balance ensures color consistency across all jobs.

**Enhancing productivity** – The C3530n MFP is quite user friendly. It's network-ready right out of the box and has an intuitive operator panel that's simple to use and a backlit LCD display that's easy to read.

It also comes with several useful software utilities: the OKI® Hot Key desktop application reduces common tasks to a single click; PaperPort® and OmniPage® from Nuance® convert scans into workable, transportable digital files and provide feature-rich OCR capabilities.

**Versatile scan-to capabilities** – Easily turn hard-copy documents into electronic files by placing

them in the automatic document feeder or directly onto the flatbed scanner, selecting a destination, then scanning them in black & white or color.

Scan directly to a locally attached PC or to the shared directory on the network without the need for additional software, to an e-mail address, or to an FTP site.

Or simply insert a USB memory stick into the port conveniently located on the front of the unit, save your scan to the memory stick, and you're on your way in seconds.

**Keeps the work flowing** – The C3530n MFP boasts a robust duty cycle of up to 35,000 pages per month, so it can be relied upon to handle large daily print and copy volumes.

Single Pass Color™ technology provides a straight paper path with fewer moving parts, allowing for smooth paper handling and higher speeds while ensuring greater reliability.

**Does more, so users can do more** – Its small footprint enables the compact C3530n MFP to fit easily in your work space. Its banner printing capability<sup>2</sup> and media versatility mean businesses can lower costs by producing more professional-looking documents in-house.

**Enjoy unmatched support and technical expertise** You can expect total support from your Authorized OKI Printing Solutions MFP provider.

If you need technical assistance, you can speak to a live expert based in North America, 24/7/365, by calling toll-free: **800.OKI.DATA** (800.654.3282).<sup>3</sup>

### C3530n MFP Highlights:

- Print, copy, scan, and fax from a single device for increased productivity
- Print and copy at speeds up to 16 ppm in color, 20 ppm in black & white<sup>1</sup>
- High Definition Color printing technology for outstanding print and copy quality
- Hassle-free networking; easy-to-use functionality
- Full-featured analog fax
- Scan to PC, network, FTP, e-mail or USB memory stick
- Compact design to fit even the smallest environment
- 50-sheet automatic document feeder (ADF)
- 250-sheet standard/max paper capacity
- Banner printing capability on sheets up to 4 feet in length<sup>2</sup>
- Separate toner cartridges and image drums for greater cost efficiency
- 1-Year Overnight Exchange limited warranty<sup>3</sup>

<sup>1</sup> Published performance results based on laboratory testing. Individual results may vary.

<sup>2</sup> Larger files may require additional memory.

<sup>3</sup> Available in the U.S. and Canada only.

# The C3530n MFP Color Multifunction Product brings versatility and ease of use to the home office or small workgroup.

The user-friendly C3530n MFP puts its full functionality at your fingertips. The operator panel features a clear, organized array of navigation buttons, a backlit LCD display and numeric keypad. A USB port is conveniently located on the front of the unit and allows for scan-to-memory stick. And the top of the MFP is designed to tilt back for easy access to the individual toner cartridges and image drums.



**Flatbed scanner:** handles up to 8.5" x 11" documents on the glass and up to 8.5" x 14" via the ADF

**Scan-to-USB memory stick:** convenient front port makes the process quick and easy

**High Definition Color:** printing technology that ensures breathtaking output, even on plain paper

**250-sheet paper tray:** fewer user interventions means greater productivity

**50-sheet ADF:** the capacity of the automatic document feeder increases user productivity

**Numeric keypad:** easily enter fax numbers, codes and quantities

**Backlit LCD display:** further simplifies navigation; enhances user productivity

**Easy-to-access functionality:** primary features are simple to locate and access

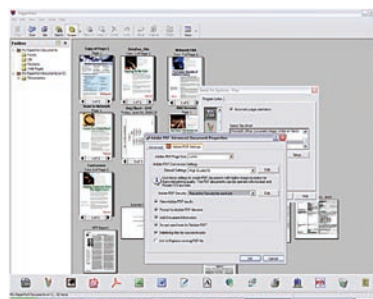
**Single Pass Color™ technology:** straight-through paper path allows for superior flexibility in paper handling

**Compact, space-saving design:** the small footprint of the C3530n MFP allows it to fit into most work spaces

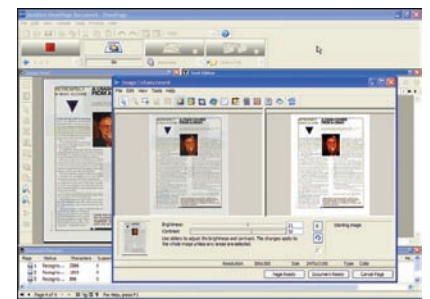
**Document management made simple** – The C3530n MFP includes software that lets you move between scan-to tasks with single click, including Scan-to-Email, Scan-to-Folder and Scan-and-Print.

PaperPort® software easily turns piles of paper and photos into PDF and JPEG files—using the MFP's scanner—and saves them to your computer for future use.

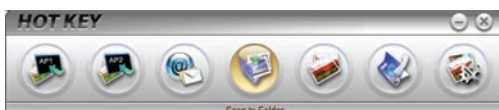
And OmniPage® optical character recognition (OCR) software quickly turns hard-copy office documents and forms into electronic files for easy editing, searching and sharing.



**PaperPort from Nuance®** is a scanning and document management application that turns hard-copy paper into digital content.



**Nuance's OmniPage OCR software** converts documents into editable electronic files, saving you time and increasing productivity.



**OKI® Hot Key software** provides a single-click method for performing common tasks; easily customized to meet the needs of your workflow environment.

# C3530n MFP

## Specifications

### Printer

- **Print Speed:** Up to 16 ppm color, 20 ppm black & white<sup>1</sup>
- **Time to First Page:** As fast as 13 seconds in color, 11 seconds in black & white<sup>1</sup>
- **Print Resolution:** 1200 x 600 dpi
- **Processor Speed:** 200 MHz
- **Duty Cycle:** 35,000 prints/copies per month
- **Connectivity:** USB v2.0 high-speed; 10/100 Base-T Ethernet (network)
- **Emulations:** Enhanced Windows® Printing (GDI)
- **Operating Systems:** Windows® Vista™/Vista x64, XP Home/Professional/x64 Server, Server 2003/2003 x64, 2000; Mac® OSX.2+
- **Fonts:** Through Host PC
- **Duplex (2-Sided) Printing:** Manual

### Copier

- **Copy Speed:** Up to 16 cpm color, 20 cpm black & white<sup>1</sup>
- **First Copy Out:** As fast as 23 seconds in color, 17 seconds in black & white<sup>1</sup>
- **Copy Resolution:** Up to 600 x 600 dpi
- **Copy Scaling:** 25% to 400% in 1% increments; 7 pre-set scaling sizes
- **Copy Quantity Selection:** 1-99

### Scanner

- **Scan Type:** Color and black & white flatbed
- **Scan Resolution:** Up to 4800 dpi
- **Scan Speed:** 300 dpi – 10 ppm color, 20 ppm black & white; 600 dpi – 5 ppm color, 10 ppm black & white
- **Scan-to-PC:** Create electronic file from hard copy original in PDF, M-TIFF or JPEG file formats (TWAIN scanning driver included; Windows compatible)
- **Address Book Management:** LDAP (Lightweight Directory Access Protocol)
- **Scan-to-Functionality:** Scan to e-mail with LDAP support; to USB memory stick; to FTP sites; to network; and to PC
- **Formats Supported:** PDF, TIFF, JPEG, BMP, PCX, GIF, TGA, PNG, WMF, EMF
- **TWAIN Driver:** Windows 2000 and higher
- **Networking Utilities:** MFP Network Tools – access features and settings of the MFP; set up Scan-to-FTP and Scan-to-Email; apply scanning restrictions; configure and manage multiple Scan-to-FTP profiles



### Fax

- **Fax Modem:** 33.6 Kbps Super G3
- **Transmission Speed:** 3 seconds/page<sup>2</sup>
- **Fax Resolution:** Up to 200 x 400 dpi
- **Speed Dials:** 100 locations
- **Broadcast Transmissions:** Up to 100 locations
- **Fax Memory:** 100 pages<sup>2</sup> (1.5 MB)
- **Fax Functions:** Broadcasting, Delayed transmission, Auto redial, Auto receive, Activity report (sending/receiving)

### Document Management

- **Utility Suite:** Nuance® PaperPort® 10, OmniPage® 4.2 SE, Hot Key from OKI®, OKI LRP, Color Correct, Swatch Utility, Network Card Setup Tool, MFP Setup Tool, TWAIN Driver, Fax Driver, Printer Driver, Job Accounting, PrintSuperVision

### System Memory

- **Standard/Max Imaging RAM:** 128 MB/320 MB

### Paper Handling

- **Scanner ADF:** Up to 50 letter/legal sheets (16 lb. – 32 lb.)
- **Paper Sizes (Min./Max.):** Main Tray from 4.1" x 5.8" to 8.5" x 14"; Multi-Purpose tray from 3" x 5" cards to 8.5" x 47.24" banners
- **Standard/Max Input:** 250 sheets via Tray 1; 1 sheet via Bypass Tray
- **Output Capacity:** 150 sheets
- **Paper Sizes:** Letter, Legal, Banner, Executive, A4, A5, B5, A6; Envelopes – C5, C6, DL, Monarch, COM 9, COM 10
- **Paper Weight:** Main tray 17 lb. – 32 lb. (64–120 gsm); Manual feed 20 lb. bond – 110 lb. index (75–203 gsm)

### Environmental

- **Size (WxDxH):** 17.6" x 21.5" x 20.5" (44.7 cm x 54.6 cm x 52.0 cm)
- **Weight:** 63.9 lb. (29.0 kg)
- **Power Consumption:** Operating Normal 400W, Max 980W, Idle 110W, Power Save <30W
- **Acoustic Noise:** Operating (Printing/Scanning/Copying) <53 dB; Standby <39 dB

### Warranty

- **System:** 1-Year limited warranty with Overnight Exchange<sup>3</sup>
- **Digital LED Printheads:** 5-Year limited warranty

For more information on the C3530n MFP Color Multifunction Product and supplies—including OKIcare warranty extensions—please call 1.800.OKI.DATA (800.654.3282)<sup>2</sup> or visit our website: [www.okiprintingsolutions.com/us](http://www.okiprintingsolutions.com/us)

<sup>1</sup> Published performance results based on laboratory testing. Individual results may vary.

<sup>2</sup> Based on ITU-T Test Chart #1.

<sup>3</sup> Available in the U.S. and Canada only.

<sup>4</sup> Toner cartridges have an estimated life based on 5% coverage of letter-size pages. Printer ships with standard 1,000-page Color (CMY) and 1,500-page Black toner cartridges.

<sup>5</sup> Estimated life, based on 3 pages per job, continuous print.

## Ordering Information

| Description                                                       | Part Numbers            |          |
|-------------------------------------------------------------------|-------------------------|----------|
| C3530n MFP 120V (Multilingual)                                    | 62428601                |          |
| C3530n MFP 230V (Multilingual)                                    | 62428602                |          |
| <b>Options</b>                                                    |                         |          |
| <b>Memory:</b><br>256 MB DIMM                                     | 70042901                |          |
| <b>Supplies</b>                                                   |                         |          |
| <b>Standard Toner Cartridges:</b>                                 |                         |          |
| Cyan Toner Cartridge                                              | 1,000 pg. <sup>4</sup>  | 43459403 |
| Magenta Toner Cartridge                                           | 1,000 pg. <sup>4</sup>  | 43459402 |
| Yellow Toner Cartridge                                            | 1,000 pg. <sup>4</sup>  | 43459401 |
| Black Toner Cartridge                                             | 1,500 pg. <sup>4</sup>  | 43459404 |
| <b>High-Capacity Toner Cartridges:</b>                            |                         |          |
| Cyan Toner Cartridge                                              | 2,000 pg. <sup>4</sup>  | 43459303 |
| Magenta Toner Cartridge                                           | 2,000 pg. <sup>4</sup>  | 43459302 |
| Yellow Toner Cartridge                                            | 2,000 pg. <sup>4</sup>  | 43459301 |
| Black Toner Cartridge                                             | 2,500 pg. <sup>4</sup>  | 43459304 |
| <b>Image Drum Kits:</b>                                           |                         |          |
| Cyan Image Drum Kit                                               | 15,000 pg. <sup>5</sup> | 43460203 |
| Magenta Image Drum Kit                                            | 15,000 pg. <sup>5</sup> | 43460202 |
| Yellow Image Drum Kit                                             | 15,000 pg. <sup>5</sup> | 43460201 |
| Black Image Drum Kit                                              | 15,000 pg. <sup>5</sup> | 43460204 |
| <b>OKIcare Overnight Exchange Warranty Extensions<sup>3</sup></b> |                         |          |
| C3530n MFP 1-Yr. Warranty Extension                               | 58280301                |          |
| C3530n MFP 2-Yr. Warranty Extension                               | 58280302                |          |
| C3530n MFP Upgrade to On-Site                                     | 58280401                |          |
| <b>OKIcare® On-Site Warranty Extensions<sup>3</sup></b>           |                         |          |
| C3530n MFP 1-Yr. Warranty Extension                               | 58280501                |          |
| C3530n MFP 2-Yr. Warranty Extension                               | 58280502                |          |
| <b>Print Media</b>                                                |                         |          |
| <b>Sheets Per Box</b>                                             |                         |          |
| Bright White Proofing Sheets:<br>8.5" x 11" (32 lb.)              | 500                     | 52206101 |
| SynFlex™ Paper (8.5" x 11" –<br>Waterproof and Tear-resistant)    | 100                     | 52205901 |
| Premium Envelopes (size #10):                                     | 100                     | 52206301 |
|                                                                   | 500                     | 52206302 |
| Banner Paper (8.5" x 35.4")                                       | 100                     | 52206002 |

Specifications are subject to change without notice.

Featured products may not be available in all countries. Please contact your local office for regional availability.

©2007 Oki Data Americas, Inc. OKI Reg. T.M., M.D., Oki Electric Industry Co., Ltd. Single Pass Color T.M. and design Reg. T.M., Hot Key, High Definition Color logo T.M., Oki Data Corp. Windows Reg. T.M., Vista T.M., Microsoft Corp. Mac Reg. T.M., Apple, Inc. Nuance, PaperPort, OmniPage Reg. T.M., Nuance Communications, Inc. USB-IF T.M., Universal Serial Bus Implementers Forum, Inc.



## OKI DATA AMERICAS, INC.

USA  
2000 BISHOPS GATE BLVD.  
MOUNT LAUREL, NJ 08054-4620  
TEL: 800.OKI.DATA (800.654.3282)  
FAX: 856.222.5320

CANADA  
2735 MATHESON BLVD. EAST  
MISSISSAUGA, ONTARIO L4W 4M8  
TEL: 905.238.4250  
FAX: 905.238.4421

LATIN AMERICA  
2000 BISHOPS GATE BLVD.  
MOUNT LAUREL, NJ 08054-4620  
TEL: 856.231.0002  
FAX: 856.222.5071

OKI DATA DE MÉXICO, S.A. DE C.V.  
MARIANO ESCOBEDO, 748 8º PISO  
COL. NUEVA ANZURES C.P. 11590  
MÉXICO, D.F.  
TEL: 55.5263.8780  
FAX: 55.5250.3501

OKI DATA DO BRASIL INFORMÁTICA LTDA.  
AV. ALFREDO EGÍDIO DE SOUZA ARANHA, 100  
BLOCO C – 4º ANDAR  
04726-170 – SÃO PAULO – SP – BRASIL  
TEL: 11.3444.3500  
FAX: 11.3444.3502

[WWW.OKIPRINTINGSOLUTIONS.COM](http://WWW.OKIPRINTINGSOLUTIONS.COM)