



KONICA MINOLTA

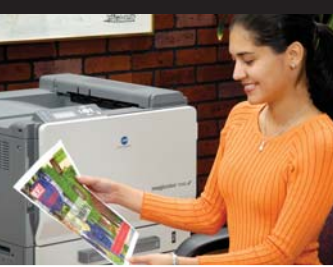
# magicolor 7450



Large-Format,  
Photorealistic  
Quality Color Laser



# Large-Format, Photorealistic Quality Color Laser



## QUICK SPECS

- 24.5 ppm in color and b&w
- First page out in 8.2 seconds (b&w), 11.4 seconds (color)
- High-performance 733 MHz G4 processor
- 9600 x 600 dpi-class (600 x 600 x 4-bit) contone resolution
- 256 MB DDR SDRAM std./1024 MB max.
- Gigabit Ethernet®, Hi-Speed USB 2.0, and parallel interfaces
- Camera direct photo printing via PictBridge-enabled USB 1.1 port
- Page size support up to 12.25" x 47.24"
- PostScript® 3, PCL® 6, PDF, and JPEG/TIFF Direct Print emulations
- Windows®, Macintosh®, and Linux® compatible
- 120,000 page-per-month duty cycle
- 1-year on-site warranty

*When image is everything and performance counts, rely on the extraordinary image quality and robust processing power of the large-format magicolor 7450. It's perfect for all your design and business printing needs.*

### Robust Performance

*Extraordinary power for the most demanding print tasks.*

- Featuring a 733 MHz G4 processor and custom acceleration hardware for fast job processing, the magicolor 7450 delivers its first b&w page in just 8.2 seconds, its first color page in 11.4 seconds, and subsequent prints at 24.5 ppm.
- Emperon controller technology provides fast document processing and cross-platform compatibility with Windows, Macintosh, and Linux operating systems.
- The magicolor 7450 supports PostScript 3, PCL 6, PDF, and JPEG/TIFF Direct Print emulations for seamless processing of all your color documents.
- Equipped with a Gigabit Ethernet interface, the magicolor 7450 supplies high-speed printing for an entire network of creative professionals.
- The printer's 120,000 page-per-month duty cycle is perfect for demanding high-volume printing.

### Exceptional Print Quality

*Precise color matching and finely detailed graphics and images.*

- The magicolor 7450's 9600 x 600 dpi-class resolution generates true-to-life photographic detail, smooth color gradients, and highly saturated deep blacks using contone printing technology.
- For dependable, accurate color the magicolor 7450 supports ICC color matching. It also includes SWOP, Commercial Press, Eurocolor, TOYO, DIC, and SNAP press emulations and PANTONE® Color tables for complete color control.
- The magicolor 7450 uses KONICA MINOLTA Simitri® Polymerized Toner, which improves fusing even on coarse media, and gives you durable prints with beautiful images and crisp text that don't smear or fade.
- The KONICA MINOLTA smart calibration system—enhanced Automatic Image Density Control (eAIDC)—assures consistent color on every print, every day, throughout the life of the printer.



### Diverse Media Handling

*Express yourself on virtually any type or size of media.*

- The magicolor 7450 handles a broad selection of media types and weights (up to 141 lb. Index), giving you enormous flexibility for brochure printing, promotional publishing, and commercial-quality documents.
- Supporting a wide range of media sizes, the magicolor 7450 can print on custom media as small as 3.55" x 5.50", to 12.25" x 18" for full-bleed tabloid designs, and up to banner size of 12.25" x 47.24".
- This workhorse printer can easily handle large print jobs for in-house production, with a maximum paper capacity of 1,850 sheets.
- Built-in PictBridge support lets you direct-print your digital photographs in brilliant, high-resolution color on 4" x 6" or larger media.





# basics

# options

## FRONT KEYPAD

- Intuitive graphical display with dynamic "help" functions
- At-a-glance toner gauges

## PRINT SPEED

- Color: Up to 24.5 ppm
- B&W: Up to 24.5 ppm

## INTERFACES

- Gigabit Ethernet (10/100/1000BaseTX), Hi-Speed USB 2.0, Parallel, USB 1.1 (for Camera Direct Photo Printing)

## MEMORY

- 256 MB RAM

## COMPATIBILITY

- Windows Vista/Server 2003/XP/2000/NT 4.0/Me/98SE
- Macintosh OS X (v 10.2+), OS 9 (v 9.1+)
- Linux Red Hat 9, SuSE 8.2
- PostScript 3 and PCL 6 emulations

## RESOLUTION

- 9600 x 600 dpi-class

## COLOR SUPPORT

- Enhanced Automatic Image Density Control (eAIDC)
- ICC-based color matching
- Commonly used press emulations
- PANTONE® Color tables

## PAPER SIZE AND INPUT

- Up to 12.25" x 18" or banner size (12.25" x 47.24")
- Adjustable 250-sheet multipurpose cassette
- 100-sheet manual feed tray



## HARD DISK

- For downloaded fonts, forms, and profiles; electronic collation; Job Accounting; direct PDF, JPEG, & TIFF printing; Proof then Print; Secured Job, Print & Hold, and Stored Job functions

## MEMORY

- Upgrade to 1024 MB

## DOCUMENT HANDLING

- Automatic duplexer for two-sided printing
- Banner tray for greater input flexibility when printing banner size

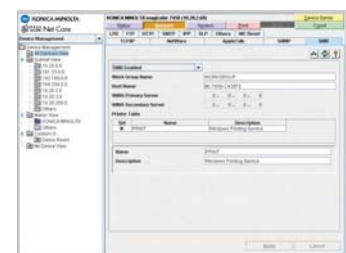
## PAPER HANDLING

- 500-sheet cassette (add up to three)
- 1,850-sheet maximum input capacity
- Caster base for printer mobility

## Convenient Printer Management

Helpful management utilities for individuals and IT professionals.

- Get real-time supply status and manage the printer from virtually anywhere using PageScope™ Web Connection and your standard browser.
- Network administrators can count on PageScope web-based tools for remote installation, management, and configuration of both KONICA MINOLTA and non-KONICA MINOLTA printers.
- Enterprise Management System (EMS) Plug-ins are available for seamless printing from HP OpenView, HP JetAdmin, IBM® Tivoli NetView, CA Unicenter®, and Microsoft® Management Console.



PageScope Net Care







# magicolor 7450 – Technical

## Printing Process

**Print Method:** Single-pass, large-format color laser

**Print Speed\*:**

Color: Up to 24.5 ppm

Monochrome: Up to 24.5 ppm

**Warm-up time:** 99 seconds or less

**First Page Output Time\*:**

Color: 11.4 seconds from an idle, ready state

Monochrome: 8.2 seconds from an idle, ready state

**Resolution:** 9600 x 600 dpi-class with Photo ART (600 x 600 x 4-bit contone)

**Recommended Duty Cycle:** Up to 120,000 prints/month

## Hardware and Software Capabilities

**Processor Type:** Power PC7447A, 733 MHz G4

**Memory:** 256 MB DDR SDRAM on board, upgradeable to 1024 MB (one slot) using 184-pin 266 MHz or more DIMMS

**Internal Hard Disk:** (optional) for downloaded fonts, forms, and profiles; electronic collation; Job Accounting; direct PDF, JPEG, and TIFF printing; Proof then Print, Secured Job, Print & Hold, and Stored Job functions (40 GB)

**Operating System Compatibility:** Windows Vista/Server 2003/XP/2000/NT 4.0/Me/98SE;

Macintosh OS X (v10.2+)/OS 9 (v9.1+); Linux Red Hat 9/SuSE 8.2

**Printer Emulations:** PostScript 3, PCL 6, PDF (hard disk required), JPEG/TIFF Direct Print (hard disk required)

**Printer Management:** PageScope Net Care, PageScope Web Connection, PageScope Direct Print, PageScope Network Setup, PageScope Peer-to-Peer Printing, PageScope EMS Plug-in, Web JetAdmin Plug-in, PageScope Plug and Print, Status Monitor

**Color Support:** Enhanced Automatic Image Density Control (eAIDC); ICC device profiles; Automatic ICC-based color matching; SWOP, Commercial Press, Eurocolor, TOYO, DIC, and SNAP press emulations; PANTONE® Color tables

## Interface Support

**Standard:** Gigabit Ethernet (10/100/1000BaseTX); USB 2.0 (supports Microsoft 'Plug and Play'); IEEE 1284 parallel (supports Microsoft 'Plug and Play'); USB 1.1 Host Port (for Camera Direct Photo Print)

**Ethernet Protocols:** TCP/IP, EtherTalk, IPX/SPX (NetWare 4/5/6), NDS Bindery, NDPS, NetBEUI, UPnP, SMB, UPD, HTTP, HTTPS, IPP 1.1, SNMP, LPD, FTP, Telnet, DHCP, BootP, ARP, Auto IP, Ping/ARP, SMTP, SLP, TCP/IP socket

## Paper Handling

**Standard Paper Input:** 250-sheet multipurpose cassette; 100-sheet manual feed tray

**Optional Paper Input:** 500-sheet cassette (up to three); banner tray

**Standard Paper Output:** 350-sheet face-down output tray

**Duplex Printing\*\*:** Manual (automatic optional)

**Paper Sizes Supported:**

Multipurpose Cassette: Letter, Legal, Ledger, 12" x 18", 4" x 6", Executive, Statement, Folio, SP Folio, Foolscap, UK Quarto, Letter Plus, Govt. Letter, Govt. Legal, A3, A4, A5, A6, B4, B5, B5 (ISO), B6, D8K, 16K, Kai 8, Kai 16, Kai 32, Japanese Postcard, Double Postcard; Monarch, Com 10, DL, C6, C5, Chou #3, Chou #4, You #0, You #2, You #4, You #6, 16K Envelopes; Custom sizes (W) 3.54" - 12.25" (90 - 311 mm), (L) 5.5" - 18" (139 - 457 mm)

Manual Feed Tray: Same as Multipurpose Cassette plus banner sizes (W) 3.55" - 12.25" (90 - 311 mm), (L) 5.50" - 47.24" (140 - 1200 mm)

500-Sheet Cassette (optional): Letter, Legal, Ledger, Statement, Govt. Letter, Govt. Legal, A3, A4, A5, B4, B5, D8K, Kai 16

Duplexer (optional): Letter, Legal, Ledger, 12" x 18", Executive, Statement, Folio, SP Folio, Foolscap, UK Quarto, Letter Plus, Govt. Letter, Govt. Legal, A3, A4, A5, B4, B5, D8K, 16K, Kai 8, Kai 16; Custom sizes (W) 3.54" - 12.25" (90 - 311 mm), (L) 5.5" - 18" (139 - 457 mm)

**Printable Area:** .16" (4 mm) from right & left edges; .17" (4.2 mm) from top & bottom edges; .08" (2 mm) from all edges for 12.25" x 18" sizes and above

## Paper Weights:

Plain paper: 16 - 24 lb. Bond (60 - 90 g/m<sup>2</sup>)

Thick stock: 50 - 141 lb. Index (90 - 256 g/m<sup>2</sup>)

**Print Media:** Plain paper, letterhead, thick stock, glossy stock, transparencies, laser-quality labels, postcards, and envelopes (Image quality not guaranteed on all media.)

## Physical

**Type:** Laser printer with internal controller

**Dimensions (WxDxH):** 25.5" x 23.6" x 18.7" (648 x 606 x 477 mm)

**Weight:** w/o consumables 114.6 lbs. (52 kg); w/ consumables: 133.4 lbs. (60.5 kg); as shipped: 176.4 lbs. (80 kg)

## Electrical

**Power Requirements:**

120V Model: 120 VAC ± 10%; 50/60 Hz ± 3%

220/240V Model: 220/240 VAC ± 10%, 50/60 Hz ± 3%

**Power Consumption:**

Operating: 700 W average

Standby: 130 W or less

## Environmental

**Temperature Requirements:** Operating: 50° to 95° F (10° to 35° C)

Non-operating: 32° to 95° F (0° to 35° C)

**Humidity:** Operating: 15% to 85% RH

Non-operating: 10% to 85% RH

**Noise Levels:** Operating: <52 dB(A); Standby: <40 dB(A)

## Regulatory/Safety Conformity

UL, cUL, CSA, FCC-B, CDRH, DOC, SASO, RPC

## Consumables\*\*\*

**In-Box Cartridges:** Printer ships with one each Cyan, Magenta, Yellow, and Black Toner Cartridges (yield up to 3,000 letter/A4 pages @ 5% coverage); Cyan, Magenta, Yellow, and Black Imaging Units; Waste Toner Box

**Replacement Cartridges:**

Cyan, Magenta, and Yellow Toner Cartridges yield up to 12,000 letter/A4 pages @ 5% coverage  
Black Toner Cartridge yields up to 15,000 letter/A4 pages @ 5% coverage

## Typefaces

137 resident PostScript fonts, 93 PCL fonts, 51 symbol sets, and 10 line printer fonts

## Warranty

1-year on-site

\* Exact print speed differs depending on system configuration, software application, driver, and document complexity.

\*\* Application software support required for page reordering.

\*\*\* The stated life expectancy of each consumable in your printer is based on printing under specific operating conditions such as page coverage for a particular page size (5% coverage of letter/A4). The actual consumable's life will vary depending on the use and other printing variables including page coverage, page size, media type, continuous or intermittent printing, ambient temperature and humidity.



KONICA MINOLTA  
PRINTING SOLUTIONS U.S.A., INC.  
(USA, Canada, Latin America)  
Tel.: +1 (800) 523 2696  
Tel.: +1 (201) 316 8200  
Fax: +1 (201) 825 3577

Websites:  
buymagicolor.com  
printer.konicaminolta.com  
q-shop.com