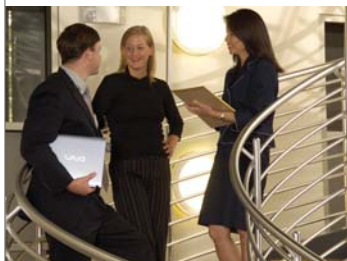




KONICA MINOLTA

# magicolor 2550 Series



Compact & Versatile  
**Network**  
Color Lasers



# Compact & Versatile Network Color Lasers



## QUICK SPECS

- 20 ppm in black & white, 5 ppm in color
- 300 MHz PowerPC processor
- 9600 x 600 dpi-class Photo ART contone resolution
- magicolor 2550 EN: 128 MB DDR SDRAM std., 640 MB max.
- magicolor 2550 DN: 256 MB DDR SDRAM std., 640 MB max.
- 10/100BaseTX Ethernet®, USB 2.0, and parallel interfaces
- First page out in 13 seconds (b&w), 22 seconds (color)
- PostScript® 3 (144 fonts) and PCL® 6 (93 fonts) printer emulations
- Windows®, Macintosh®, and Linux® compatible
- Automatic two-sided printing (magicolor 2550 DN)
- 35,000 page-per-month duty cycle
- 1-year exchange warranty

*The compact and affordable magicolor 2550 Series printers boast the enhanced graphics quality and high-end printing features typically found in larger, more expensive models.*

### Compact and Affordable

*These little powerhouses are the perfect fit for any desktop and budget.*

- Though they're small enough to fit into any workspace, the magicolor 2550 printers have the power to handle the demanding requirements of both small offices and large workgroups.
- Full front access means reloading supplies and clearing media jams is a snap.
- Long-lasting toner yields 1,500 (standard capacity) or 4,500 (high capacity) prints for low cost-per-page printing.
- Technical support is US-based and toll-free for 5 years. Answer times consistently average under 1 minute.

### Printing Power & Performance

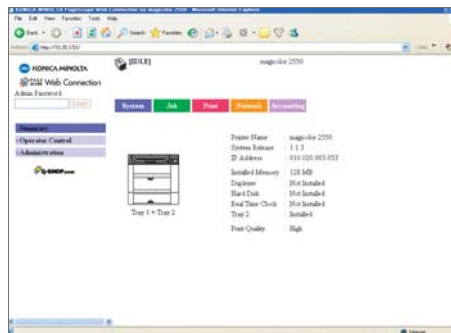
*The magicolor 2550 Series provides the speed needed to satisfy demanding job requirements.*

- Emperon technology boosts printer performance and enhances image quality in Windows, Macintosh, and Linux environments while simplifying the entire printing process.
- The 300 MHz PowerPC CPU quickly processes even the most complex files.
- DDR SDRAM doubles file data throughput and swiftly delivers print jobs.

### Ease of Use

*Easy setup and operation are built into the magicolor 2550 Series.*

- Pre-installed high-capacity toner cartridges and auto-installation software mean the magicolor 2550 printers are ready to print in just minutes.
- Print jobs can be customized easily with comprehensive printer drivers that offer collation, fit-to-page scaling, separation pages, watermarks, tray selection, secure printing, and many other features.
- The PageScope™ suite of printer utilities allows network administrators to configure and manage printers remotely.
- PageScope Web Connection provides instant access to print job status and supply levels.
- The 10/100BaseTX Fast Ethernet® interface provides high-speed network printing for busy workgroups. USB 2.0 and parallel ports are also available for local operation.



### Brilliant, Consistent Color

*A legacy of innovative color technology ensures outstanding image quality.*

- Enhanced Automatic Image Density Control (eAIDC) ensures consistent, accurate color from the first page to the last and from one document to the next.
- 9600 x 600 dpi-class Photo ART quality and contone screening deliver amazing photographic detail, smooth color gradients, and crisp text.
- Industry-standard ICC-based color matching provides automatic or single-button controls for automatic color correction of print files.



- KONICA MINOLTA Simitri® Polymerized Toner produces sharper output, finer text, and smoother halftones than conventional toner on all common media types. This state-of-the-art toner technology also reduces toner and energy usage.



# basics

# options

## CONTROL PANEL

- Intuitive display and menu
- At-a-glance toner gauges

## PRINT SPEED

- Color: Up to 5 ppm
- B&W: Up to 20 ppm

## INTERFACES

- Fast Ethernet (10/100BaseTX), Hi-Speed USB 2.0, Parallel

## MEMORY

- magicolor 2550 EN: 128 MB DDR SDRAM
- magicolor 2550 DN: 256 MB DDR SDRAM

## COMPATIBILITY

- Windows Vista/Server 2003/XP/2000/NT4/Me/98SE
- Macintosh OS X (v10.2+)/OS 9 (v9.1+)
- Linux Red Hat 9/SuSE 8.2
- PostScript 3, PCL 6 emulations

## RESOLUTION

- 9600 x 600 dpi-class with Photo ART
- eAIDC and ICC-based color matching

## DOCUMENT HANDLING

- Automatic duplexer for two-sided printing (magicolor 2550 DN)

## PAPER INPUT

- Up to legal (8.5" x 14")
- Adjustable 200-sheet multipurpose tray



## HARD DISK

- For downloaded fonts, forms, and profiles; electronic collation; Job Accounting; direct PDF printing; Proof then Print, Secured Job, Print & Hold, and Stored Job functions

## MEMORY

- Upgrade to 640 MB

## DOCUMENT HANDLING

- Automatic duplexer for two-sided printing (magicolor 2550 EN); additional memory required for 9600 x 600 dpi-class full-color prints: 128 MB (letter) or 256 MB (legal)

## PAPER INPUT

- 500-sheet cassette (letter or A4)
- 700-sheet maximum input capacity



## Cross-Platform Compatibility

*The magicolor 2550 Series is the ideal printing solution for diverse office workgroups.*

- PostScript 3 and PCL 6 emulations support most popular software applications, providing seamless creation and processing of all your color documents.
- With Windows, Macintosh, and Linux system compatibility, the magicolor 2550 Series is at home in any workgroup.
- Support for NetWare®, TCP/IP, EtherTalk®, and NetBIOS/NetBEUI ensures smooth integration into mixed network configurations.





# magicolor 2550 Series – Technical

## Printing Process

**Print Method:** Electrophotographic laser  
**Print Speed\*:**  
 Color: Up to 5 ppm  
 Monochrome: Up to 20 ppm  
**Warm-Up Time:** 52 seconds average  
**First-Page-Output Time\*:**  
 Color: 22 seconds from an idle, ready state  
 Monochrome: 13 seconds from an idle, ready state  
**Resolution:** Up to 9600 x 600 dpi-class with Photo ART  
**Recommended Duty Cycle:** Up to 35,000 prints/month

## Hardware and Software Capabilities

**Processor Type:** PowerPC, 300 MHz  
**Memory:** 128 MB (magicolor 2550 EN)/256 MB (magicolor 2550 DN) DDR SDRAM on board, upgradable to 640 MB (one slot) using 100-pin DIMMs  
**Internal Hard Disk (optional):** For downloaded fonts, forms, and profiles; electronic collation; Job Accounting; direct PDF printing; Proof then Print, Secured Job, Print & Hold, and Stored Job functions (40 GB)  
**Operating System Compatibility:** Windows Vista/Server 2003/XP (SP1+)/2000 (SP4+)/NT4 (SP6+)/Me/98SE; Macintosh OS X (v10.2+)/OS 9 (v9.1+); Linux Red Hat 9/SuSE 8.2  
**Printer Emulations:** PostScript 3, PCL 6; PDF 1.4 (hard disk required)  
**Printer Management:** PageScope Net Care, PageScope Web Connection, PageScope Network Setup, PageScope Peer-to-Peer Printing Tool, PageScope EMS Plug-in, HP Web JetAdmin Plug-in, PageScope Plug and Print, PageScope NDPS Gateway, PageScope Direct Print, Print Monitor, Status Monitor  
**Color Support:** Enhanced Automatic Image Density Control (eAIDC); ICC device profiles; Automatic ICC-based color matching; Dynamic Contone Screening; SWOP, Commercial, EuroColor, TOYO, and DIC press emulations

## Interface Support

**Standard:** Ethernet 10/100BaseTX, USB 2.0 (supports Microsoft 'Plug and Play'), IEEE 1284 parallel (supports Microsoft 'Plug and Play')  
**Ethernet Protocols:** TCP/IP, EtherTalk, IPX/SPX (NetWare 4/5/6), NDS Bindery, NDPS, NetBIOS, NetBEUI, SMB, HTTP, HTTPS, IPP1.1, SNMP, LPD, FTP, DHCP, BootP, ARP, Auto IP, Ping/ARP, SMTP, SLP, TCP/IP socket, Telnet, UPnP 2.0

## Media Handling

**Standard Paper Input:** 200-sheet multipurpose tray  
**Optional Paper Input:** 500-sheet cassette  
**Standard Paper Output:** 200-sheet face-down output tray  
**Duplex Printing:** magicolor 2550 DN: standard; magicolor 2550 EN; manual\*\* (automatic optional)  
**Standard Automatic Duplexer (magicolor 2550 DN):** For two-sided printing  
**Optional Automatic Duplexer (magicolor 2550 EN):** For two-sided printing; additional memory required for full-color 9600 x 600 dpi-class prints: 128 MB (letter size) or 256 MB (legal size)  
**Paper Sizes Supported:**  
 Multipurpose Tray: Letter, Legal, A4, Executive, Statement, Folio, Foolscap, UK Quarto, Letter Plus, Govt. Letter, Govt. Legal, A5, B5, B5 (ISO), Kai 16; Photo Print 4x6; Japanese Postcard, Double Postcard; Monarch, Com 10, DL, C6, C5, Chou #3, Chou #4, You #4, 16K, 32K Envelopes; Custom sizes (W) 3.6" - 8.5" (92 - 216 mm), (L) 5.8" - 14" (148 - 356 mm)  
 500-Sheet Cassette (optional): Letter, A4  
**Printable Area:** 0.16" (4 mm) from all edges; 13.2" (335.6 mm) color and 13.7" (347.6 mm) monochrome guaranteed print length  
**Paper Weights:**  
 Plain paper: 16 - 24 lb. Bond (60 - 90 g/m<sup>2</sup>)  
 Thick stock: 24 - 80 lb. Cover (90 - 220 g/m<sup>2</sup>)  
**Print Media:** Plain paper, letterhead, thick stock, glossy stock, transparencies, laser-quality labels, postcards, and envelopes

## Physical

**Type:** Laser printer with internal controller  
**Dimensions (WxDxH):** magicolor 2550 EN: w/ tray cover 16.9" x 19.8" x 13.4" (430 x 502 x 341 mm); w/ tray closed 16.9" x 15.6" x 13.4" (430 x 395 x 341 mm)  
 magicolor 2550 DN: w/ tray cover 16.9" x 22.2" x 13.4" (430 x 564 x 341 mm); w/ tray closed 16.9" x 18.0" x 13.4" (430 x 457 x 341 mm)  
**Weight:** magicolor 2550 EN: w/o consumables 38.2 lbs. (17.4 kg); w/ consumables 45.8 lbs. (20.8 kg); as shipped 55.2 lbs. (25.1 kg)  
 magicolor 2550 DN: w/o consumables 42.3 lbs. (19.2 kg); w/ consumables 49.3 lbs. (22.6 kg); as shipped 70.1 lbs. (31.8 kg)

## Electrical

**Power Requirements:**  
 120V Model: 120 VAC ± 10%; 50/60 Hz ± 3%  
 220/240V Model: 220/240 VAC ± 10%; 50/60 Hz ± 3%  
**Power Consumption:**  
 Operating: 450 W or less (color), 600 W or less (black & white), 1,100 W maximum  
 Standby: 250 W or less  
**Energy Star\*\*\* Compliant:** 15 W or less

## Environmental

**Temperature Requirements:** Operating: 50° to 95° F (10° to 35° C)  
 Non-operating: 32° to 95° F (0° to 35° C)  
**Humidity:** Operating: 15% to 85% RH  
 Non-operating: 10% to 85% RH  
**Noise Levels:** Operating: <52 dB(A); Standby: <35 dB(A)

## Regulatory/Safety Conformity

UL, cUL, CSA, FCC-B, CDRH, DOC, SASO, RPC

## Consumables\*\*\*\*

**In-Box Cartridges:** Printer ships with one each Cyan, Magenta, Yellow, and Black Toner Cartridges (yield up to 4,500 letter/A4 pages @ 5% coverage); Drum Cartridge  
**Replacement Cartridges:** Cyan, Magenta, and Yellow Toner Cartridges (yield up to 1,500 or 4,500 letter/A4 pages @ 5% coverage); Black Toner Cartridge (yields up to 4,500 letter/A4 pages @ 5% coverage)

## Typefaces

144 resident PostScript fonts, 93 PCL fonts, and 10 line printer fonts

## Warranty

1-year exchange

## Model Comparison

	magicolor 2550 EN	magicolor 2550 DN
Speed	20 ppm b&w / 5 ppm color	20 ppm b&w / 5 ppm color
Resolution	9600 x 600 dpi-class	9600 x 600 dpi-class
Memory	128 MB	256 MB
Interface	Ethernet, USB 2.0, Parallel	Ethernet, USB 2.0, Parallel
Compatibility	Windows, Macintosh, Linux	Windows, Macintosh, Linux
Emulations	PostScript 3, PCL 6	PostScript 3, PCL 6
Automatic Duplex	Optional	Standard

\* Exact print speed differs depending on system configuration, software application, driver, and document complexity.

\*\* Application software support required for page reordering.

\*\*\* The addition of some options, in some combinations, may cause the product to become non-compliant. Energy Star compliance does not represent an EPA endorsement of any product or service.

\*\*\*\* The stated life expectancy of each consumable in your printer is based on printing under specific operating conditions such as page coverage for a particular page size (5% coverage of letter/A4). The actual consumable's life will vary depending on the use and other printing variables including page coverage, page size, media type, continuous or intermittent printing, ambient temperature, and humidity.



KONICA MINOLTA  
 PRINTING SOLUTIONS U.S.A., INC.  
 (USA, Canada, Latin America)  
 Tel.: +1 (800) 523 2696  
 Tel.: +1 (201) 316 8200  
 Fax: +1 (201) 825 3577

Websites:  
 buymagicolor.com  
 printer.konicaminolta.com  
 q-shop.com

PN: mc2550SeriesSs2\_07